

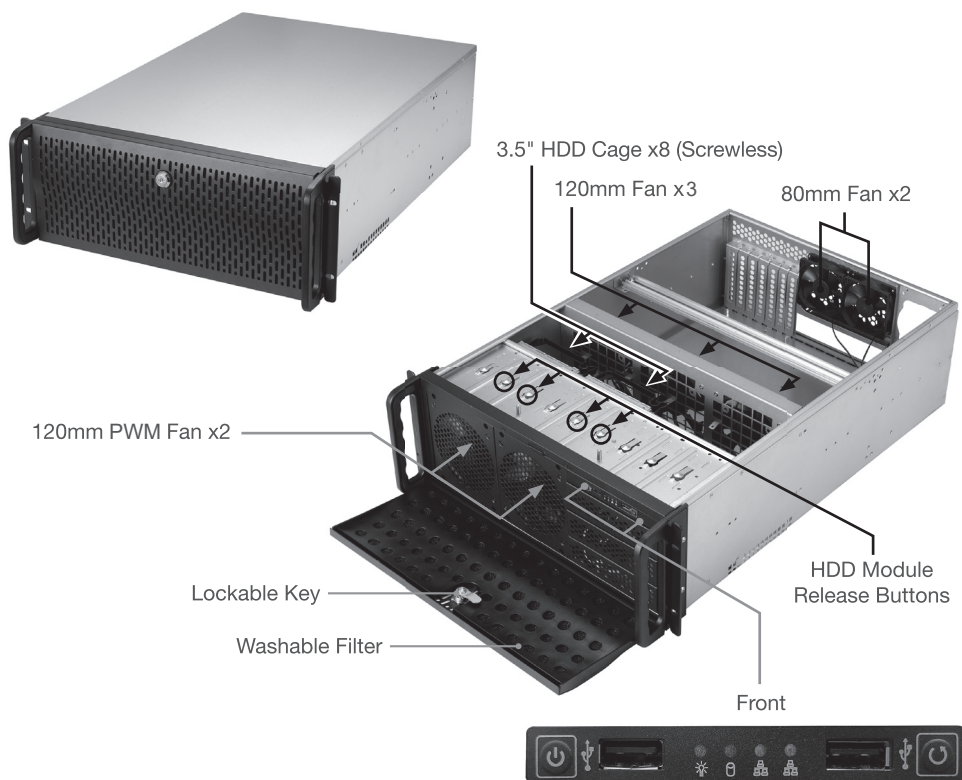
RSV-L4000U

Thank you for purchasing a Rosewill Server Chassis.
Please read the instruction manual before use and retain for future reference.

INTRODUCTION

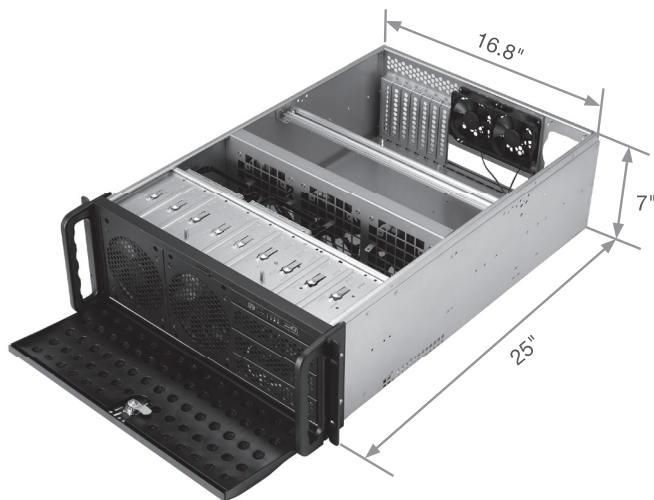
RSV-L4000U is a 4U rackmount industrial chassis for various kinds of server computer which supports any E-ATX (12" x 13") and below form factor motherboard design and PS2 power supply. In addition, RSV-L4000U has a large-scale fan filter and easy-to-use knob key for great serviceability of the system.

PRODUCT OVERVIEW



FEATURES

- Carries 8 x internal 3.5" HDD and 3 x 5.25" devices (which can switch to a 3.5" HDD x 4 module).
- Best cooling design carries up to 120mm front PWM cooling fan x5 in the front and 80mm cooling fan x2 in the rear max (all are included in RSV-L4000U).
- Front door with key lock for better security.
- Special design for fixing PCI card in the system (7 pieces max).
- 2x USB 3.0 connectors in front panel.



INSTALLATION GUIDE

Top Cover Disassembly

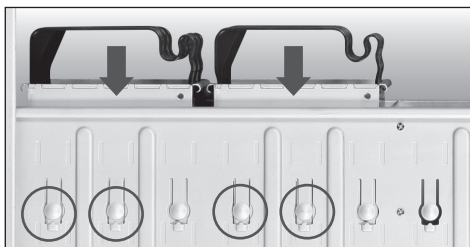


1. Remove the screws from each side of the Chassis (two on each side).

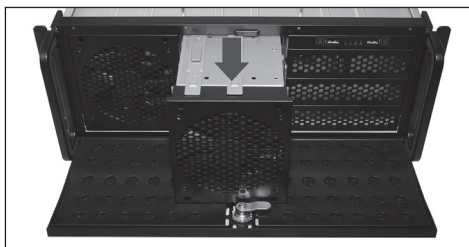


2. Once the screws are removed, push the top cover to remove from the chassis.

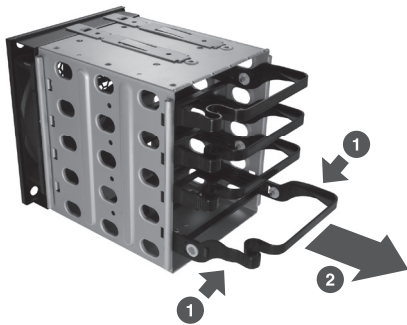
3.5" Device Installation



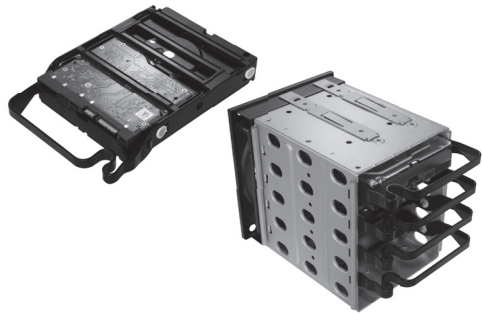
1. First press the two round shape buttons using your thumbs, then use your index finger to push the 3.5" module to remove it.



2. Pull the module out from the front panel.



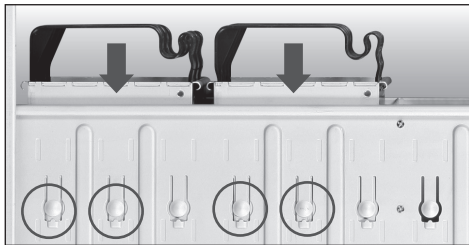
3. Press both side bars of HDD tray, then pull the HDD tray out from the module to begin installation.



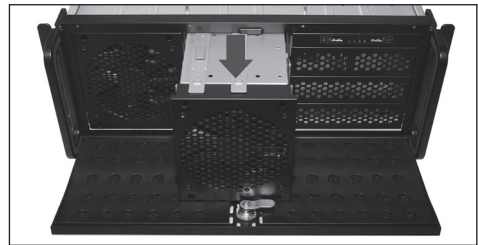
4. The HDD tray can be easily clipped onto 3.5" HDD.

5. To complete the 3.5" HDD installation, push the HDD tray back into the module, then push the module back to the chassis.

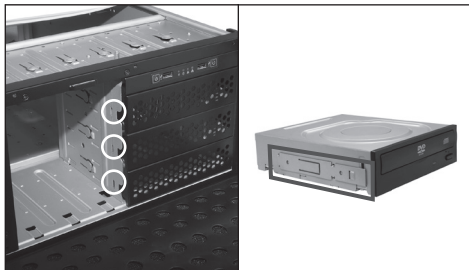
5.25" ODD Installation



1. First press the two round shape buttons using your thumbs, then use your index finger to push the middle 3.5" module to remove it.



2. Pull the module out from the front panel.



3. Using a flathead screw driver to press the circled areas to move the front panel out.

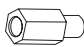


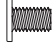
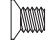
4. Press the ODD rail onto both sides of the ODD.


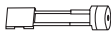


5. You can slide the ODD back in to complete the installation. Make sure the round shape button has locked with the ODD rail. You can also remove the ODD by pressing the button, then pull out.

SPECIFICATIONS

Chassis Type	Rackmount
Color	Black & Silver
Case Material	Metal/Steel, 1.0 mm thickness
Motherboard Compatibility	12" x 13" E-ATX and below
Form Factor	4U
Cooling System	
80mm Fans	2 max (All 2x 80mm Fans included)
120mm Fans	5 max (All 5x 120mm Fans included, 2 of them are PWM fans)
Expansion	
Internal 5.25" Drive Bays	3
Internal 3.5" Drive Bays	8
Expansion Slots	7
Physical Specifications	
Control & Indicator	1 x Power Switch + 1 x Reset Switch 1 x LED (Power) + 1 x LED (HDD) + 2 x LED (LAN) 2 x USB 3.0
Dimensions(L x W x H)	25 x 16.8 x 7.0 in (635 x 427 x 178 mm)
Weight	Net Weight: 31.9 lbs. (14.5 kg) Gross Weight : 39.8 lbs (18.0 kg)
Package Contents	RSV-L4000U Server Case, Keys, Screws, Other Accessories

PIC	ITEM	PURPOSE
	Motherboard Standoff x 3	Motherboard
	Screws x 6	Power Supply
	Screws x 20	Motherboard
	Screws x 20	3.5" HDD
	Screws x 8	Upper Case

PIC	ITEM	PURPOSE
	Rail x6	HDD Module ODD Rail
	Buzzer x1 (PC Speaker)	Motherboard



Technical Support Information techsupport@rosewill.com 1-800-575-9885

Please register your product at www.rosewill.com for complete warranty information and support for your product.

RSV-L4000U_B